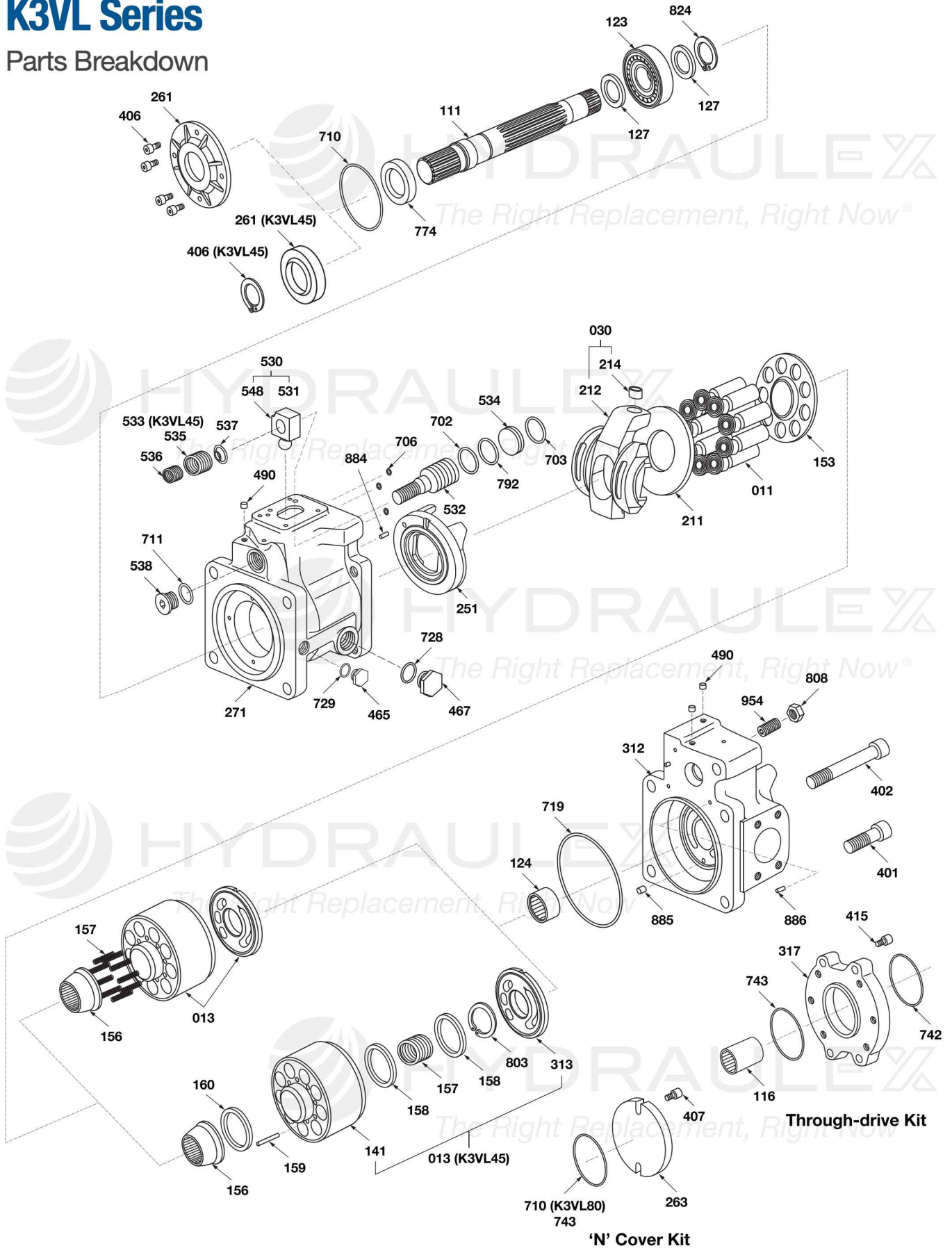


K3VL Series

Parts Breakdown



K3VL Series, 45-80 Size

Parts Breakdown

NO.	DESCRIPTION	K3VL45		K3VL60		K3VL80	
		QTY	PART #	QTY	PART #	QTY	PART #
11	PISTON GROUP ASSEMBLY (9 PIECES)	1	P-29245300470K	1	P-29212500345	1	P-29245300454K
13	CYLINDER-VALVE PLATE ASSEMBLY (CW)	1	P-29211900320K	1	P-29211900329	1	P-29211900322K
-	CYLINDER-VALVE PLATE ASSEMBLY (CCW)	1	P-29211900321K	1	P-29211900335	1	P-29211900323K
30	SWASHPLATE ASSEMBLY	1	P-29241500131	1	P-29241500347	1	P-2953802301
111	"K" SAE KEYED SHAFT	1	P-29242500499	1	P-29242500499	1	P-29242500374
-	"K" SAE KEYED SHAFT W/THRU-DRIVE	1	P-29242500537	1	P-29242500537	1	P-29242500529
-	"S" SAE SPLINE SHAFT	1	P-29242500530	1	P-29242500530	1	P-29242500429
-	"S" SAE SPLINE SHAFT W/THRU-DRIVE	1	P-29242500538	1	P-29242500538	1	P-29242500449
-	"T" SAE SPLINE SHAFT	1	P-29242500595K	1	P-29242500595K	-	-
-	"T" SAE SPLINE SHAFT W/THRU DRIVE	1	P-29242500596	1	P-29242500596	-	-
115	"K" SAE KEYED SHAFT	1	P-29031800063	1	P-29031800063	1	P-29031800062
116	THRU-DRIVE COUPLING - SAE A	1	P-29031500264K	1	P-29031500264K	1	P-29031500241K
-	THRU-DRIVE COUPLING - SAE B	1	P-29031500265K	1	P-29031500265K	1	P-29031500262K
-	THRU-DRIVE COUPLING - SAE BB	1	P-29031500266K	1	P-29031500266K	1	P-29031500267K
-	THRU-DRIVE COUPLING - SAE C	-	-	-	-	1	P-29031500263K
-	THRU-DRIVE COUPLING - SAE C (KEYED COUPLING, K3VL80 ONLY)	-	-	-	-	1	P-29031500365K
123	FRONT ROLLER BEARING	1	P-PNUP206ET	1	P-PNUP206ET	1	P-PNUP307R1KD
124	REAR NEEDLE BEARING	1	P-PRNA5922	1	P-PRNA5922	1	P-PAJ502809B
127	BEARING SPACER	2	P-38300127	2	P-38300127	2	P-38600127A
153	SET PLATE	1	P-3840018153	1	P-29241100215	1	P-29241100009
156	SPHERICAL BUSHING	1	P-3753700845	1	P-3753700845	1	P-29246100029
157	CYLINDER SPRING	1	P-38400157	1	P-38400157	9	P-2953801623
158	RING GUIDE	2	P-38400158	2	P-38400158	-	-
159	ROLLER PIN	6	P-PJR328F	6	P-PJR328F	-	-
160	SPACER PLATE	1	P-38400160	1	P-38400160	-	-
211	SHOE PLATE	1	P-3753700859	1	P-3753700859	1	P-2953801742
214	TILTING PIN BUSHING	1	P-P1R152012	1	P-P1R152012	1	P-P1R152012
* 251	SWASHPLATE SUPPORT (CW)	1	P-29233300120	1	P-29233300120	1	P-29233300111
* -	SWASHPLATE SUPPORT (CCW)	1	P-29233300121	1	P-29233300121	1	P-29233300115
261	SHAFT SEAL COVER (STANDARD MOUNTING)	1	P-29231500461	1	P-29231500461	1	P-29231500139
263	THRU-DRIVE COVER PLATE 'N'	1	P-29231500316	1	P-29231500316	1	P-29231500316
271	PUMP CASING (SAE MOUNTING AND PORTS)						
-	W/OUT TORQUE LIMIT INTERFACE	1	P-29232500131	1	P-29232500131	1	P-29232500126
-	W/TORQUE LIMIT INTERFACE	1	P-29232500125	1	P-29232500125	1	P-29232500123

* Note: Purchase #492 (P-PHK040L) plug with swashplate support.

K3VL Series, 45-80 Size

Parts Breakdown

NO.	DESCRIPTION	K3VL45		K3VL60		K3VL80	
		QTY	PART #	QTY	PART #	QTY	PART #
312	VALVE COVER (CLOCKWISE W/UNIFIED THREADS)						
-	W/SIDE PORTS AND NO THRU-DRIVE	1	P-29231100321	1	P-29231100321	1	P-29231100305
-	W/SIDE PORTS AND THRU-DRIVE	1	P-29231100320	1	P-29231100320	1	P-29231100310
-	"R" W/REAR PORTS	1	P-29231100423	1	P-29231100423	1	P-29231100425K
312	VALVE COVER (COUNTERCLOCKWISE W/ UNIFIED THREADS)						
-	W/SIDE PORTS AND THRU-DRIVE	1	P-29231100324	1	P-29231100324	1	P-29231100311
-	"R" W/REAR PORTS	1	P-29231100424	1	P-29231100424	1	P-29231100426K
317	SUBPLATE ADAPTER - SAE A		Not required		Not required		Not required
-	SUBPLATE ADAPTER - SAE B	1	P-29247500358	1	P-29247500358	1	P-29247500354
-	SUBPLATE ADAPTER - SAE BB	1	P-29247500358	1	P-29247500358	1	P-29247500354
-	SUBPLATE ADAPTER - SAE C 2-BOLT	-	-	-	-	1	P-29247500355
-	SUBPLATE ADAPTER - SAE C 4-BOLT	-	-	-	-	1	P-29247500439
401	S.H.C.S. (VALVE COVER TO PUMP CASING)	4	P-0SBM1445	4	P-0SBM1445	4	P-0SBM1650
406	SHAFT SEAL COVER RETAINING RING	1	P-ORR65	1	P-ORR65	-	-
-	SHAFT SEAL COVER S.H.C.S.	-	-	-	-	4	P-0SBM616KD
407	S.H.C.S. (THRU-DRIVE COVER PLATE)	2	P-0SBM1020	2	P-0SBM1020	2	P-0SBM1020
415	S.H.C.S. SUBPLATE ADAPTER TO PUMP - SAE A		Not required		Not required		Not required
-	S.H.C.S. SUBPLATE ADAPTER TO PUMP - SAE B	4	P-0SBM825	4	P-0SBM825	4	P-0SBM1025
-	S.H.C.S. SUBPLATE ADAPTER TO PUMP - SAE BB	4	P-0SBM825	4	P-0SBM825	4	P-0SBM1025
-	S.H.C.S. SUBPLATE ADAPTER TO PUMP - SAE C	-	-	-	-	4	P-0SBM1030
465	AIR BLEED PLUG SAE TYPE	1	P-PPU7	1	P-PPU7	1	P-PPU7
467	CASE DRAIN PLUG SAE TYPE	2	P-PPU12	2	P-PPU12	2	P-PPU12
490	PUMP CASING PLUG						
-	CLOCKWISE W/OUT TORQUE LIMIT	5	P-PBP1162403R	5	P-PBP1162403R	6	P-PBP1162403R
-	CLOCKWISE W/TORQUE LIMIT	6	P-PBP1162403R	6	P-PBP1162403R	6	P-PBP1162403R
-	COUNTERCLOCKWISE W/OUT TORQUE LIMIT	7	P-PBP1162403R	7	P-PBP1162403R	8	P-PBP1162403R
-	COUNTERCLOCKWISE W/TORQUE LIMIT	8	P-PBP1162403R	8	P-PBP1162403R	8	P-PBP1162403R
492	SWASH PLATE SUPPORT PLUG (CCW)	1	P-PHK040L	1	P-PHK040L	1	P-PHK040L
530	TILTING PIN ASSEMBLY	1	P-29211500011	1	P-29211500011	1	P-2953802963
532	SERVO PISTON	1	P-29244900048	1	P-29244900048	1	P-29244900047
533	SERVO BIAS SPRING	1	P-29033402731K	1	P-29033401585	-	-
534	SERVO PISTON STOPPER	1	P-29251100122	1	P-29251100322	1	P-29251100100

K3VL Series, 45-80 Size

Parts Breakdown

NO.	DESCRIPTION	K3VL45		K3VL60		K3VL80	
		QTY	PART #	QTY	PART #	QTY	PART #
535	OUTER SERVO BIAS SPRING	-	-	-	-	1	P-29033401599
536	INNER SERVO BIAS SPRING	-	-	-	-	1	P-29033401600
537	SERVO BIAS SPRING SEAT	1	P-29032700295	1	P-29032700295	1	P-29032700294
538	SERVO STOPPER PLUG (MIN SIDE)	1	P-0RH38	1	P-0RH38	1	P-0R0H12
702	SERVO STOPPER O-RING - VITON (STD)	1	P-00RBG25W	1	P-00RBG25W	1	P-00RBG30W
703	SERVO CASE O-RING - VITON (STD)	1	P-00RBG40W	1	P-00RBG40W	1	P-00RBG45W
706	REGULATOR PASSAGE O-RING - NITRILE (STD)	3	P-00RBP8	3	P-00RBP8	3	P-00RBP8
710	SEAL COVER O-RING - NITRILE (STD)	1	P-00RBG65	1	P-00RBG65	1	P-00RBG85
-	THRU-DRIVE COVER O-RING - NITRILE (STD)	-	-	-	-	1	P-00RBG85
711	SERVO PISTON PLUG O-RING - NITRILE (STD)	1	P-00RBP14	1	P-00RBP14	1	P-00RBP18
712	THRU-DRIVE COVER (EXCEPT K3VL80) & SUBPLATE TO VALVE HOUSING O-RING - NITRILE (STD)	1	P-00RBG85	1	P-00RBG85	1	P-00RBG85
719	VALVE COVER PILOT O-RING - NITRILE (STD)	1	P-00RBG115	1	P-00RBG115	1	P-00RBG125
728	CASE DRAIN PORT O-RING - NITRILE (STD) (SAE MOUNTING AND PORTS)	2	P-PARP568908	2	P-PARP568908	2	P-PARP568908
729	AIR BLEED PORT O-RING - NITRILE (STD) (SAE MOUNTING AND PORTS)	1	P-PARP568904	1	P-PARP568904	1	P-PARP568904
742	O-RING (SECOND PUMP TO SUBPLATE) SAE B - NITRILE (STD)	1	P-00RBG105	1	P-00RBG105	1	P-00RBG105
-	O-RING (SECOND PUMP TO SUBPLATE) SAE BB - NITRILE (STD)	1	P-00RBG105	1	P-00RBG105	1	P-00RBG105
-	O-RING (SECOND PUMP TO SUBPLATE) SAE C - NITRILE (STD)	-	-	-	-	1	P-00RBG130
774	SHAFT SEAL - VITON (STD)	1	P-PMP030F1A	1	P-PMP030F1A	1	P-PMP035F15
792	SERVO STOPPER BACK-UP RING	1	P-0T2BG25	1	P-0T2BG25	1	P-0T2BG30
803	SNAP RING CYLINDER SPRING	1	P-0RR42	1	P-0RR42	-	-
808	MAX FLOW SET SCREW LOCK NUT	1	P-0RNM16	1	P-0RNM16	1	P-0RNM16
824	SNAP RING SHAFT-FRONT BEARING	1	P-0SR30	1	P-0SR30	1	P-0SR35
884	SWASHPLATE GUIDE PIN	1	P-PJR612	1	P-PJR612	1	P-PJR820
885	VALVE COVER GUIDE PIN	2	P-0SPV612	2	P-0SPV612	1	P-PJR612
886	LOCATING SPRING PIN	-	-	-	-	1	
901	LIFTING EYE BOLT	1	P-0EBM8	1	P-0EBM8	1	P-0EBM8
954	MAX FLOW SET SCREW	1	P-PSSSM1640	1	P-PSSSM1640	1	P-PSSSM1650
981	NAMEPLATE	1	P-PNPA2550A	1	P-PNPA2550A	1	P-PNPA2550A
983	NAMEPLATE PIN	2	P-0SK2548	2	P-0SK2548	2	P-0SK2548

K3VL Series, 45-80 Size

Spare Parts List/Rebuild Kits

NO.	DESCRIPTION	K3VL45		K3VL60		K3VL80	
		QTY	PART #	QTY	PART #	QTY	PART #
	ROTARY GROUP KIT (CW) (INCLUDES ITEMS: 011, 013, 211, 153-160)		P-29L42802R		P-290606130453		P-29L82803R
	ROTARY GROUP KIT (CCW) (INCLUDES ITEMS: 011, 013, 211, 153-160)		P-29L42802L		P-290606130454		P-29L82803L
	SWASH GROUP KIT (CW) (INCLUDES ITEMS: 030, 251)		P-29L42176R		-		P-29L82177R
	SWASH GROUP KIT (CCW) (INCLUDES ITEMS: 030, 251)		P-29L42176L		-		P-29L82177L
SEAL KITS (STANDARD)							
	PUMP (INCLUDES SHAFT SEAL)		P-29L4100S0Y		P-29L4100S0Y		P-29L8100S0Y
	P0/L0 REGULATOR		P-293LP0Y		P-293LP0Y		P-293LP0Y
	TORQUE LIMITER		P-2938HY		P-2938HY		P-2938HY
THRU-DRIVE SEAL KITS							
	SAE A		P-00RBG85KD		P-00RBG85KD		P-00RBG85KD
	SAE B, BB		P-29LHTBY		P-29LHTBY		P-29LHTBY
	SAE C, CC		-		-		P-29LHTCY
REGULATOR CONVERSION KITS							
	P0 TO L0		P-969-0348		P-969-0348		P-969-0348
	L0 to P0		P-969-0347		P-969-0347		P-969-0347

K3VL Series, 112-200 Size

Parts Breakdown

NO.	DESCRIPTION	K3VL112		K3VL140		K3VL200	
		QTY	PART #	QTY	PART #	QTY	PART #
11	PISTON GROUP ASSEMBLY (9 PIECES)	1	P-29245300456K	1	P-29245300424K	1	P-29245300466K
13	CYLINDER-VALVE PLATE ASSEMBLY (CW)	1	P-29211900324K	1	P-29211900326K	1	P-29211900333K
-	CYLINDER-VALVE PLATE ASSEMBLY (CCW)	1	P-29211900325K	1	P-29211900327K	1	P-29211900336K
30	SWASHPLATE ASSEMBLY	1	P-2953801990	1	P-29241500144	1	P-2953801991KD
111	"K" SAE KEYED SHAFT	1	P-29242500590	1	P-29242500590	1	P-29242501107
-	"K" SAE KEYED SHAFT W/THRU-DRIVE	1	P-29242500599	1	P-29242500599	1	P-29242501105
-	"S" SAE SPLINE SHAFT	1	P-29242500519	1	P-29242500519	1	P-29242501106K
-	"S" SAE SPLINE SHAFT W/THRU-DRIVE	1	P-29242500594	1	P-29242500594	1	P-29242501062K
-	"F" SAE SPLINE SHAFT (K3VL200 ONLY)	-	-	-	-	1	P-29242500592K
-	"F" SAE SPLINE SHAFT W/THRU DRIVE (K3VL200 ONLY)	-	-	-	-	1	P-29242501173
-	"C" SAE spline shaft	1	P-29242500916K	1	P-29242500916K	-	-
-	"C" SAE spline shaft w/thru-drive	1	P-29242500917K	1	P-29242500917K	-	-
-	"X" SAE keyed shaft	1	P-29242500930	1	P-29242500930	-	-
-	"X" SAE keyed shaft w/thru-drive	1	P-29242500931K	1	P-29242500931K	-	-
-	"W" SAE spline shaft	1	P-29242500939K	1	P-29242500939K	-	-
-	"W" SAE spline shaft w/thru-drive	1	P-29242500940	1	P-29242500940	-	-
-	"Y" SAE keyed shaft	1	P-29242500964K	1	P-29242500964K	-	-
-	"Y" SAE keyed shaft w/thru-drive	1	P-29242500965K	1	P-29242500965K	-	-
115	"K" SAE KEYED SHAFT	1	P-29031800071	1	P-29031800071	1	P-29031800071
-	"X" SAE KEYED SHAFT	1	P-29031800062	1	P-29031800062	-	-
-	"Y" SAE KEYED SHAFT	1	P-29031800283K	1	P-29031800283K	-	-
116	THRU-DRIVE COUPLING - SAE A	1	P-29031500268K	1	P-29031500268K	1	P-29031500761K
-	THRU-DRIVE COUPLING - SAE B	1	P-29031500269K	1	P-29031500269K	1	P-29031500762K
-	THRU-DRIVE COUPLING - SAE BB	1	P-29031500270K	1	P-29031500270K	1	P-29031500804K
-	THRU-DRIVE COUPLING - SAE C	1	P-29031500271K	1	P-29031500271K	1	P-29031500763K
-	THRU-DRIVE COUPLING - SAE CC	1	P-29031500272K	1	P-29031500272K	1	P-29031500805K
-	THRU-DRIVE COUPLING - SAE D (SAE D AND SAE E - K3VL200)	1	P-29031500273K	1	P-29031500273K	1	P-29031500764K
123	FRONT ROLLER BEARING	1	P-PNUP308R1CS50	1	P-PNUP308R1CS50	1	P-PNUP309ET
124	REAR NEEDLE BEARING	1	P-PAJ503518	1	P-PAJ503518	1	P-PAJ503806
127	BEARING SPACER	2	P-38800127	2	P-38800127	1	P-29033700018
153	SET PLATE	1	P-29241100056	1	P-29241100056	1	P-29241100049
156	SPHERICAL BUSHING	1	P-29246100030	1	P-29246100030	1	P-29246100032K
157	CYLINDER SPRING	9	P-2953801769	9	P-29033401784	9	P-2953802061
158	RING GUIDE	-	-	-	-	-	-

K3VL Series, 112-200 Size

Parts Breakdown

NO.	DESCRIPTION	K3VL112		K3VL140		K3VL200	
		QTY	PART #	QTY	PART #	QTY	PART #
159	ROLLER PIN	-	-	-	-	-	-
160	SPACER PLATE	-	-	-	-	-	-
211	SHOE PLATE	1	P-6871000211	1	P-6871000211	1	P-371A00AA124
214	TILTING PIN BUSHING	1	P-P1R2025125	1	P-P1R2025125	1	P-P1R2025125
* 251	SWASHPLATE SUPPORT (CW)	1	P-29233300117	1	P-29233300117	1	P-29233300337K
* -	SWASHPLATE SUPPORT (CCW)	1	P-29233300122	1	P-29233300122	1	P-29233300364K
261	SHAFT SEAL COVER (STANDARD MOUNTING)	1	P-29231500504	1	P-29231500504	1	P-29231500138K
-	SHAFT SEAL COVER (K3VL112, 140 SAE C MOUNT)	1	P-29231500831K	1	P-29231500831K	-	-
263	THRU-DRIVE COVER PLATE 'N'	1	P-29231500316	1	P-29231500316	1	P-29231500316
271	PUMP CASING (SAE MOUNTING AND PORTS)						
-	W/OUT TORQUE LIMIT INTERFACE	1	P-29232500145	1	P-29232500145	1	P-29232500395
-	W/TORQUE LIMIT INTERFACE	1	P-29232500129	1	P-29232500129	1	P-29232500363
-	W/OUT TORQUE LIMIT INTERFACE (SAE C MTG)	1	P-29232500303	1	P-29232500303	-	-
-	W/TORQUE LIMIT INTERFACE (SAE C MTG)	1	P-29232500304K	1	P-29232500304K	-	-
312	VALVE COVER (CLOCKWISE W/UNIFIED THREADS)						
-	W/SIDE PORTS AND NO THRU-DRIVE	1	P-29231100360	1	P-29231100360	1	P-29231100696K
-	W/SIDE PORTS AND THRU-DRIVE	1	P-29231100358	1	P-29231100358	1	P-29231100691K
-	"R" W/REAR PORTS	1	P-29231100636	1	P-29231100636	-	-
312	VALVE COVER (COUNTERCLOCKWISE W/ UNIFIED THREADS)						
-	W/SIDE PORTS AND THRU-DRIVE	1	P-29231100359	1	P-29231100359	1	P-29231100708K
-	"R" W/REAR PORTS	1	P-29231100637	1	P-29231100637	-	-
317	SUBPLATE ADAPTER - SAE A		Not required		Not required	1	P-29247500674
-	SUBPLATE ADAPTER - SAE B, BB	1	P-29247500360	1	P-29247500360	1	P-29247500675
-	SUBPLATE ADAPTER - SAE C, CC 2-BOLT	1	P-29247500361	1	P-29247500361	1	P-29247500667
-	SUBPLATE ADAPTER - SAE C 4-BOLT	1	P-29247500603	1	P-29247500603	1	P-29247500676
-	SUBPLATE ADAPTER - SAE D	1	P-29247500362	1	P-29247500362	1	P-29247500677
-	SUBPLATE ADAPTER - SAE E	-	-	-	-	1	P-29247500686
401	S.H.C.S. (VALVE COVER TO PUMP CASING)	4	P-0SBM2050	4	P-0SBM2050	4	P-0SBM2455
402	S.H.C.S. (SUBPLATE ADAPTER TO PUMP SAE A K3VL200)	-	-	-	-	2	P-0SBM825
406	SHAFT SEAL COVER RETAINING RING FOR 112 & 140 C MOUNT	1	P-ORR90	1	P-ORR90	-	-
-	SHAFT SEAL COVER S.H.C.S.	4	P-0SBM820	4	P-0SBM820	4	P-0SBM820
407	S.H.C.S. (THRU-DRIVE COVER PLATE)	2	P-0SBM1020	2	P-0SBM1020	2	P-0SBM1020

* Note: Purchase #492 (P-PHK040L) plug with swashplate support.

K3VL Series, 112-200 Size

Parts Breakdown

NO.	DESCRIPTION	K3VL112		K3VL140		K3VL200	
		QTY	PART #	QTY	PART #	QTY	PART #
415	S.H.C.S. SUBPLATE ADAPTER TO PUMP - SAE A		Not required		Not required		Not required
-	S.H.C.S. SUBPLATE ADAPTER TO PUMP - SAE B	4	P-0SBM1230	4	P-0SBM1230	8	P-0SBM1230
-	S.H.C.S. SUBPLATE ADAPTER TO PUMP - SAE BB	4	P-0SBM1230	4	P-0SBM1230	8	P-0SBM1230
-	S.H.C.S. SUBPLATE ADAPTER TO PUMP - SAE C	4	P-0SBM1235	4	P-0SBM1235	8	P-0SBM1230
-	S.H.C.S. SUBPLATE ADAPTER TO PUMP - SAE CC	4	P-0SBM1235	4	P-0SBM1235	8	P-0SBM1230
-	S.H.C.S. SUBPLATE ADAPTER TO PUMP - SAE D (SAE D AND SAE E K3VL200)	4	P-0SBM1250	4	P-0SBM1250	8	P-0SBM1245
465	AIR BLEED PLUG SAE TYPE	1	P-PPU7	1	P-PPU7	1	P-PPU7
467	CASE DRAIN PLUG SAE TYPE	2	P-PPU17	2	P-PPU17	2	P-PPU17
490	PUMP CASING PLUG						
-	CLOCKWISE W/OUT TORQUE LIMIT	5	P-PBP1162403R	5	P-PBP1162403R	6	P-PBP1162403R
*	CLOCKWISE W/TORQUE LIMIT	6	P-PBP1162403R	6	P-PBP1162403R	6	P-PBP1162403R
-	COUNTERCLOCKWISE W/OUT TORQUE LIMIT	7	P-PBP1162403R	7	P-PBP1162403R	8	P-PBP1162403R
-	COUNTERCLOCKWISE W/TORQUE LIMIT	8	P-PBP1162403R	8	P-PBP1162403R	8	P-PBP1162403R
492	SWASH PLATE SUPPORT PLUG (CW)	-	-	-	-	1	P-PHK040L
-	SWASH PLATE SUPPORT PLUG (CCW)	2	P-PHK040L	2	P-PHK040L	1	P-PHK040L
530	TILTING PIN ASSEMBLY	1	P-2953802958	1	P-2953802958	1	P-29244900209AK
532	SERVO PISTON	1	P-29244900049	1	P-29244900049	1	P-29244900209
533	SERVO BIAS SPRING	-	-	-	-	-	-
534	SERVO PISTON STOPPER	1	P-29251100138	1	P-29251100125	1	P-29251100320K
535	OUTER SERVO BIAS SPRING	-	P-29033402732K	1	P-29033402732K	1	P-29033402720K
536	INNER SERVO BIAS SPRING	-	P-29033401647	1	P-29033401647	1	P-29033402721K
537	SERVO BIAS SPRING SEAT	1	P-29032700309	1	P-29032700309	1	P-29032700576K
538	SERVO STOPPER PLUG (MIN SIDE)	1	P-0R0H34	1	P-0R0H34	1	P-0R0H1
702	SERVO STOPPER O-RING - VITON (STD)	1	P-00RBG40W	1	P-00RBG40W	1	P-00RBP46WKD
703	SERVO CASE O-RING - VITON (STD)	1	P-00RBG55W	1	P-00RBG55W	1	P-00RBG60WKD
706	REGULATOR PASSAGE O-RING - NITRILE (STD)	3	P-00RBP8	3	P-00RBP8	3	P-00RBP8
710	SEAL COVER O-RING - SAE C MOUNT K3VL112/140 NITRILE (STD)	1	P-00RBG90	1	P-00RBG90	-	-
-	SEAL COVER O-RING O-RING - SAE D MOUNT NITRILE (STD)	1	P-00RBG95	1	P-00RBG95	1	P-00RBG105
-	Thru-drive cover o-ring Nitrile (Std)	-	-	-	-	-	-

* K3VL112/140 swashplate supports had a running design change, old models require 2 plus, new design only 1.

K3VL Series, 112-200 Size

Parts Breakdown

NO.	DESCRIPTION	K3VL112		K3VL140		K3VL200	
		QTY	PART #	QTY	PART #	QTY	PART #
711	SERVO PISTON PLUG O-RING - NITRILE (STD)	1	P-00RBP24	1	P-00RBP24	1	P-00RBP29
712	THRU-DRIVE COVER (EXCEPT K3VL80) & SUBPLATE TO VALVE HOUSING O-RING - NITRILE (STD)	1	P-00RBG85	1	P-00RBG85	1	P-00RBG85
719	VALVE COVER PILOT O-RING - NITRILE (STD)	1	P-PCPP155	1	P-PCPP155	1	P-PT0180
728	CASE DRAIN PORT O-RING - NITRILE (STD) (SAE MOUNTING AND PORTS)	2	P-PARP568912	2	P-PARP568912	2	P-PARP568912
729	AIR BLEED PORT O-RING - NITRILE (STD) (SAE MOUNTING AND PORTS)	1	P-PARP568904	1	P-PARP568904	1	P-PARP568904
742	O-RING (REAR PUMP TO SUBPLATE) SAE A - NITRILE (STD) - K3VL200 ONLY	-	-	-	-	1	P-00RBG85
-	O-RING (REAR PUMP TO SUBPLATE) SAE B - NITRILE (STD)	1	P-00RBG105	1	P-00RBG105	1	P-00RBG105
-	O-RING (REAR PUMP TO SUBPLATE) SAE BB - NITRILE (STD)	1	P-00RBG105	1	P-00RBG105	1	P-00RBG105
-	O-RING (REAR PUMP TO SUBPLATE) SAE C - NITRILE (STD)	1	P-00RBG130	1	P-00RBG130	1	P-00RBG130
-	O-RING (REAR PUMP TO SUBPLATE) SAE CC - NITRILE (STD)	1	P-00RBG130	1	P-00RBG130	1	P-00RBG130
-	O-RING (REAR PUMP TO SUBPLATE) SAE D - NITRILE (STD) - 154.4MM ID, 3.1MM	1	P-PCPP155	1	P-PCPP155	1	P-PCPP155
-	O-RING (REAR PUMP TO SUBPLATE) SAE E - NITRILE (STD) - K3VL200 ONLY 169.4MM ID, 3.1MM	-	-	-	-	1	P-PCPP170
743	O-RING (FRONT PUMP TO SUBPLATE) SAE A - NITRILE (STD)	1	P-00RBG85	1	P-00RBG85	1	P-00RBG85
-	O-RING (FRONT PUMP TO SUBPLATE) SAE B - NITRILE (STD)	1	P-00RBG85	1	P-00RBG85	1	P-00RBG120
-	O-RING (FRONT PUMP TO SUBPLATE) SAE BB - NITRILE (STD)	1	P-00RBG85	1	P-00RBG85	1	P-00RBG120
-	O-RING (FRONT PUMP TO SUBPLATE) SAE C - NITRILE (STD)	1	P-00RBG85	1	P-00RBG85	1	P-00RBG125
-	O-RING (FRONT PUMP TO SUBPLATE) SAE CC - NITRILE (STD)	1	P-00RBG85	1	P-00RBG85	1	P-00RBG125
-	O-RING (FRONT PUMP TO SUBPLATE) SAE D - NITRILE (STD)	1	P-00RBG85	1	P-00RBG85	1	P-PCPP125
-	O-RING (FRONT PUMP TO SUBPLATE) SAE E - NITRILE (STD) - K3VL200 ONLY	-	-	-	-	1	P-PCPP125
774	SHAFT SEAL - VITON (STD)	1	P-PTCV48V	1	P-PTCV48V	1	P-PTCV55DLVKD
792	SERVO STOPPER BACK-UP RING	1	P-0T2BG40	1	P-0T2BG40	1	P-0T2SP46
803	SNAP RING CYLINDER SPRING	-	-	-	-	-	-
808	MAX FLOW SET SCREW LOCK NUT	1	P-0RNM20	1	P-0RNM20	1	P-0RNM20
824	SNAP RING SHAFT-FRONT BEARING	1	P-0SR40	1	P-0SR40	1	P-0SR45

K3VL Series, 112-200 Size

Parts Breakdown

NO.	DESCRIPTION	K3VL112		K3VL140		K3VL200	
		QTY	PART #	QTY	PART #	QTY	PART #
884	SWASHPLATE GUIDE PIN	1	P-PJR818	1	P-PJR818	1	P-PJR818
885	VALVE COVER GUIDE PIN	1	P-PJR812	1	P-PJR812	1	P-PJR812
886	LOCATING SPRING PIN	1	P-0SPV614	1	P-0SPV614	1	P-0SPV614
901	LIFTING EYE BOLT	2	P-0EBM8	2	P-0EBM8	2	P-0EBM8
954	MAX FLOW SET SCREW	1	P-PSSSM2055	1	P-PSSSM2055	1	P-PSSSM2080
981	NAMEPLATE	1	P-PNPA2550A	1	P-PNPA2550A	1	P-PNPA2550A
983	NAMEPLATE PIN	2	P-0SK2548	2	P-0SK2548	2	P-0SK2548

K3VL Series, 112-200 Size

Spare Parts List/Rebuild Kits

NO.	DESCRIPTION	K3VL112		K3VL140		K3VL200	
		QTY	PART #	QTY	PART #	QTY	PART #
	ROTARY GROUP KIT (CW) (INCLUDES ITEMS: 011, 013, 211, 153-160)		P-29LG2804R		P-29LH2805R		P-290606130455
	ROTARY GROUP KIT (CCW) (INCLUDES ITEMS: 011, 013, 211, 153-160)		P-29LG2804L		P-29LH2805L		P-290606130456
	SWASH GROUP KIT (CW) (INCLUDES ITEMS: 030, 251)		P-29LG2178R		P-29LH2179R		-
	SWASH GROUP KIT (CCW) (INCLUDES ITEMS: 030, 251)		P-29LG2178L		P-29LH2179L		-
SEAL KITS (STANDARD)							
	PUMP (INCLUDES SHAFT SEAL)		P-29LH100S0Y		P-29LH100S0Y		P-290606130461
	PUMP (W/ 'C' SHAFT AND MOUNT)		P-29070219-3076		P-29070219-3076		-
	P0/L0 REGULATOR		P-293BP0Y		P-293BP0Y		P-293BP0Y
	TORQUE LIMITER		P-2938HY		P-2938HY		P-2938HY
THRU-DRIVE SEAL KITS							
	SAE A		P-00RBG85KD		P-00RBG85KD		P-290606130462
	SAE B, BB		P-29LHTBY		P-29LHTBY		P-290606130463
	SAE C, CC		P-29LHTCKD		P-29LHTCKD		P-290606130464
	SAE D		P-29LHTDKD		P-29LHTDKD		P-290606130465
	SAE E		-		-		P-290606130466
THRU-DRIVE SEAL KITS (ALL NITRILE)							
	SAE A T/D KIT (COUPLING & O-RING)		P-29LHTAKD		P-29LHTAKD		P-29LKTAKD
	SAE B THRU-DRIVE KIT		P-29LHTBKD		P-29LHTBKD		P-29LKTBKD
	SAE BB THRU-DRIVE KIT		P-29LHT2KD		P-29LHT2KD		P-29LKT2KD
	SAE C 2-BOLT THRU-DRIVE KIT		P-29LHTCKD		P-29LHTCKD		P-29LKTCKD
	SAE C 4-BOLT THRU-DRIVE KIT		P-29LHTC4KD		P-29LHTC4KD		P-29LKTC4KD
	SAE CC THRU-DRIVE KIT		P-29LHT3KD		P-29LHT3KD		P-29LKT3KD
	SAE D THRU-DRIVE KIT		P-29LHTDKD		P-29LHTDKD		P-29LKTDKD
	SAE E THRU-DRIVE KIT		-		-		P-29LKTEKD
REGULATOR CONVERSION KITS							
	P0 TO L0		P-969-0348		P-969-0348		P-969-0348
	L0 TO P0		P-969-0347		P-969-0347		P-969-0347