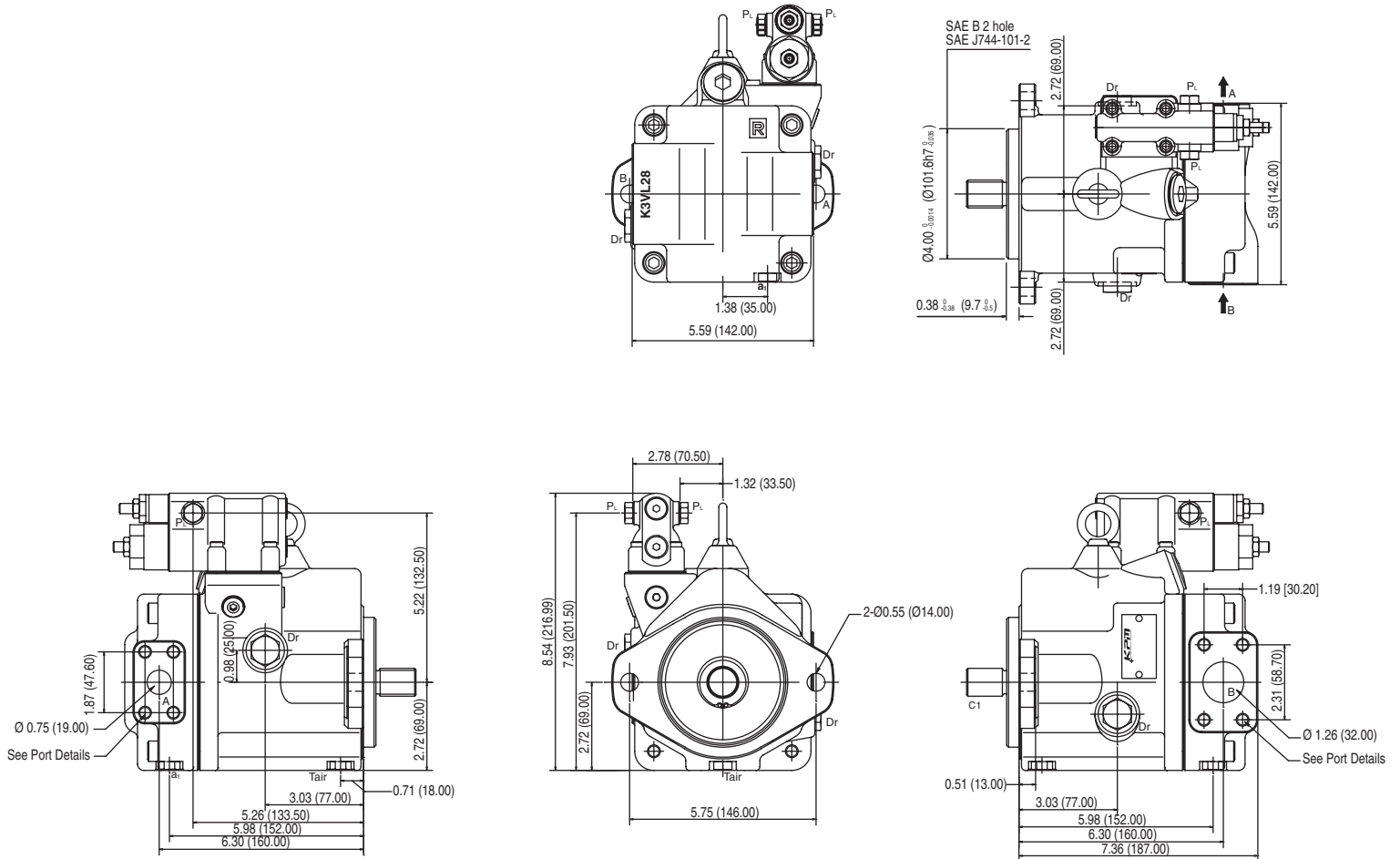


Installation Drawings

K3VL28 With Cut-off/Load Sense Control (Clockwise Rotation)

Inlet and outlet ports reversed for counter clockwise rotation



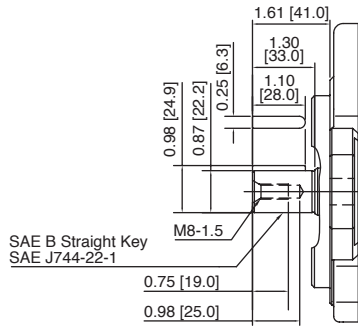
Port Details

Port Name	Port Size and Description	Tightening Torque lbf-ft (Nm)
A	Delivery Port	
	3/4" SAE J518C Code 61 (5000 psi) Unified Thread Type "S": 3/8" - 16 - 2B (0.71" depth)	42 (57)
B	Inlet Port	
	1-1/4" SAE J518C Code 61 (3000 psi) Unified Thread Type "S": 1/2" - 13 - 2B (0.87" depth)	72 (98)
Dr	Drain Port "S" Type: 1/2" O-Ring Boss - SAE J1926/1 (3/4" - 16UNF - 2B)	72 (98)
P _L / P _R	PO/LO Control Port "S" Type: 1/4" O-Ring Boss - SAE J1926/1 (7/16" - 20UNF - 2B)	9 (12)
Tair	Air Bleed Port "S" Type: 1/4" O-Ring Boss - SAE J1926/1 (7/16" - 20UNF - 2B)	9 (12)

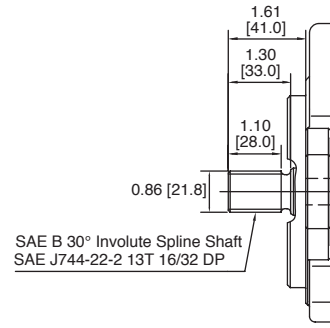
Dimensions shown in inches and (millimeters) unless noted otherwise.

Mounting Flange

Model Code Option "K"

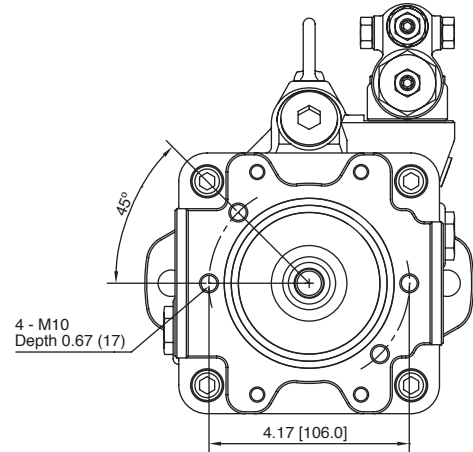
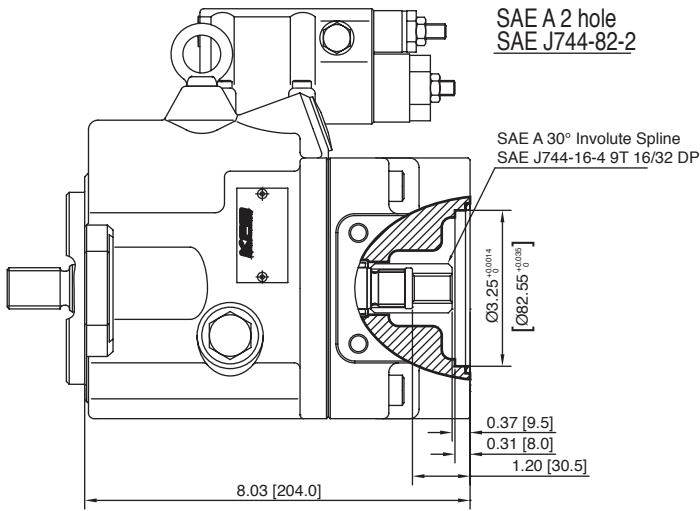


Model Code Option "S"

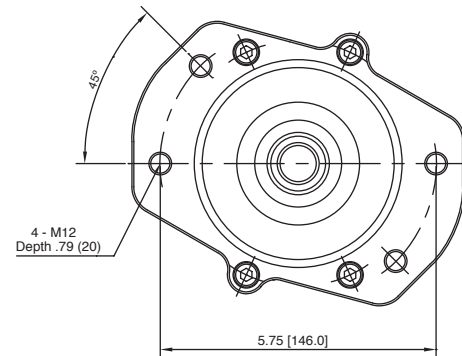
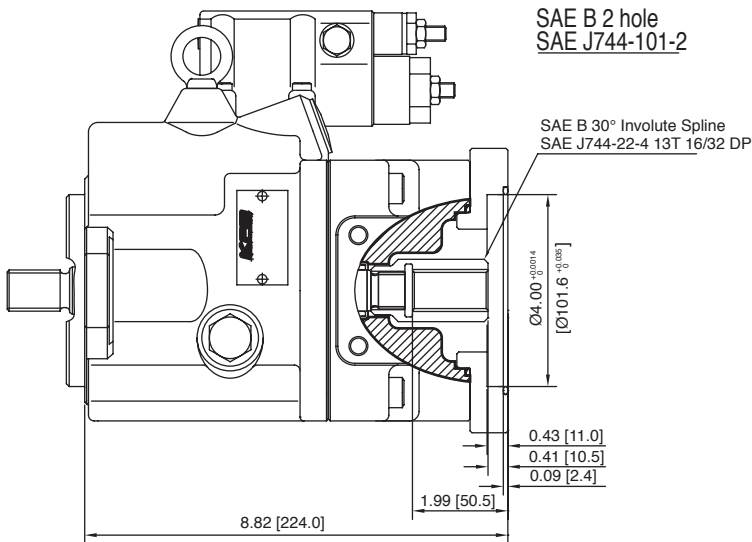


K3VL28 Through Drive Installation Details

SAE A

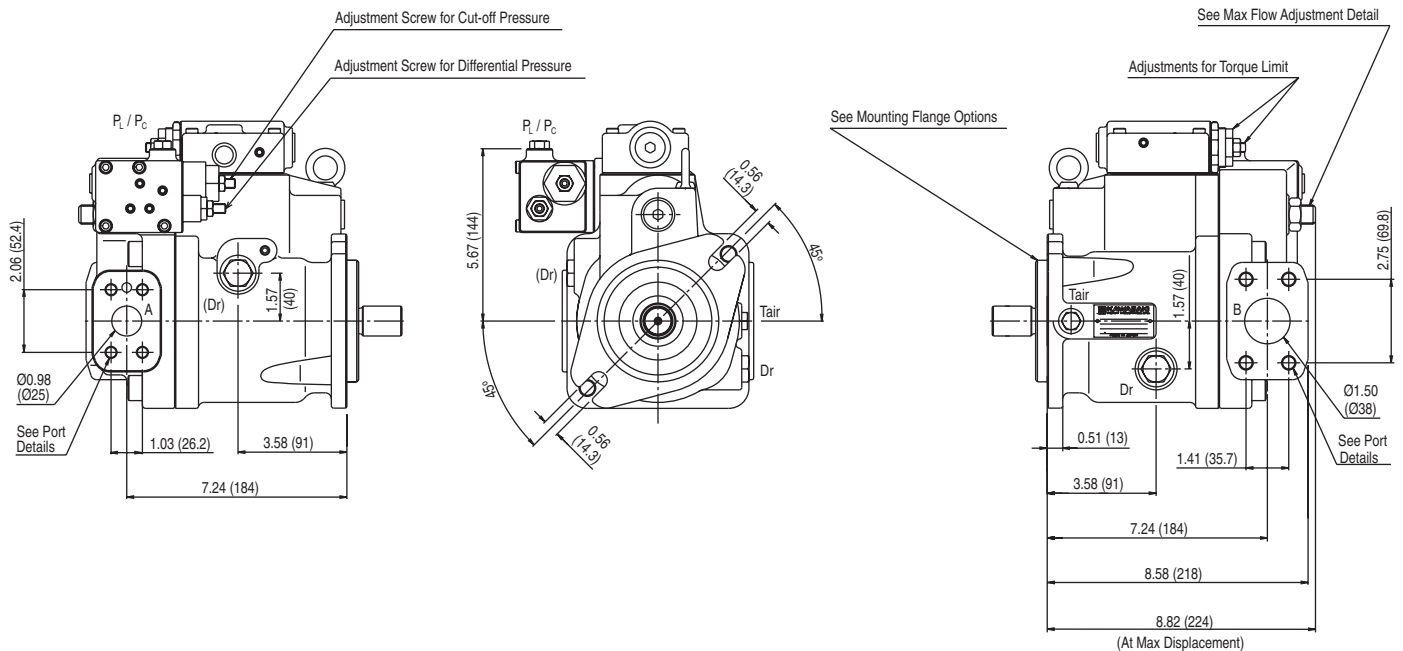
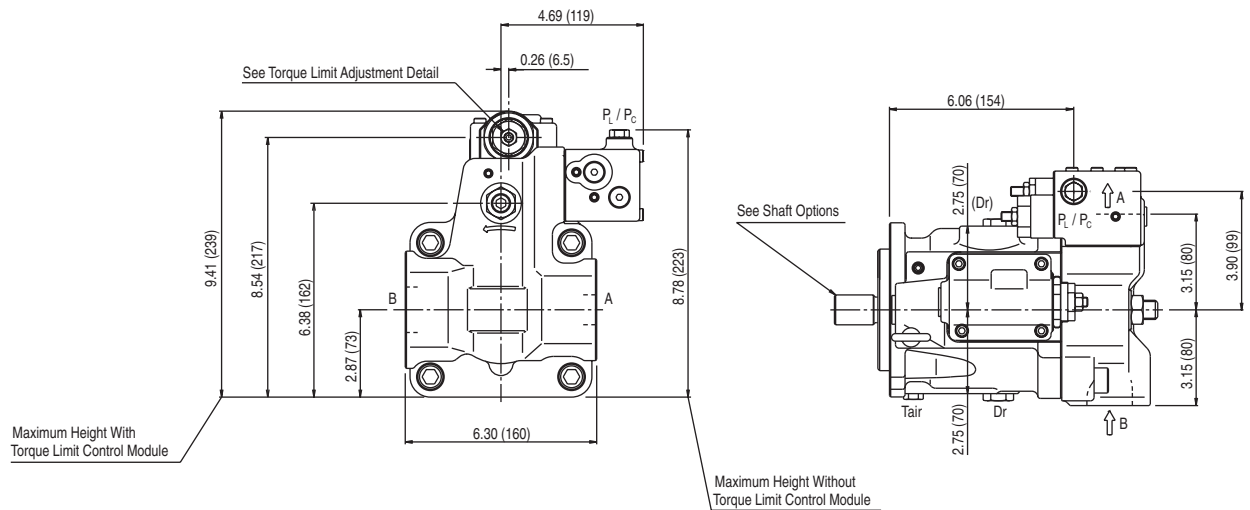


SAE B



K3VL45/60 With Cut-off/Load Sense Control And Torque Limit Module (Clockwise Rotation)

Inlet and outlet ports reversed for counter clockwise rotation



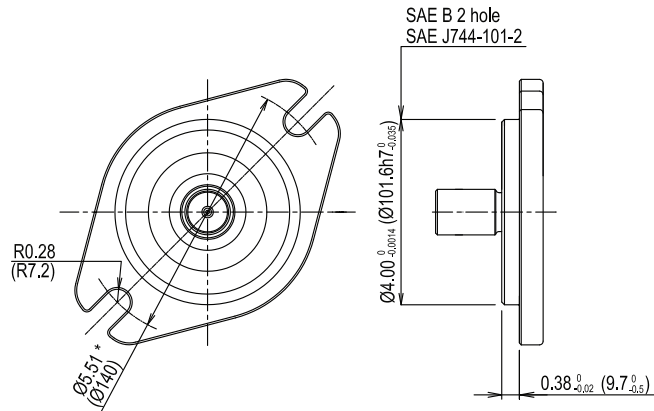
Port Details

Port Name	Port Size and Description	Tightening Torque lbf-ft (Nm)
A	Delivery Port	
	1" SAE J518C Code 61 (5000 psi) Unified Thread Type "S": 3/8" - 16 - 2B (0.71" depth)	42 (57)
B	Inlet Port	
	1-1/2" SAE J518C Code 61 (3000 psi) Unified Thread Type "S": 1/2" - 13 - 2B (0.87" depth)	72 (98)
Dr	Drain Port "S" Type: 1/2" O-Ring Boss - SAE J1926/1 (3/4" - 16UNF - 2B)	72 (98)
P _L / P _C	PO/LO Control Port "S" Type: 1/4" O-Ring Boss - SAE J1926/1 (7/16" - 20UNF - 2B)	9 (12)
Tair	Air Bleed Port "S" Type: 1/4" O-Ring Boss - SAE J1926/1 (7/16" - 20UNF - 2B)	9 (12)

Dimensions shown in inches and (millimeters) unless noted otherwise.

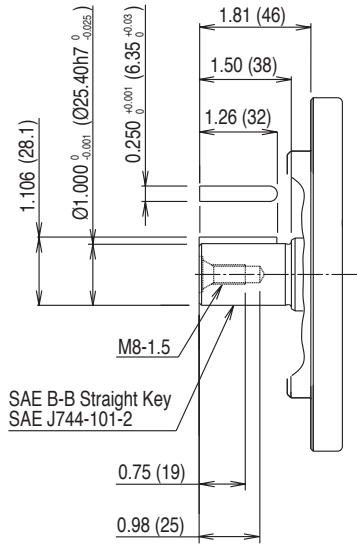
Mounting Flange

Model Code Options "K" or "S"

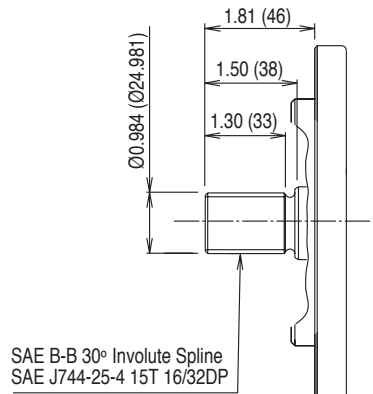


Shafts

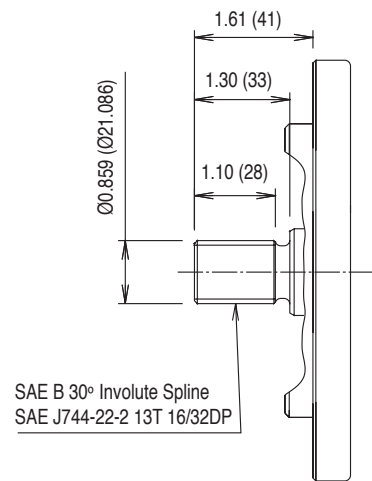
Model Code Option "K"



Model Code Option "S"

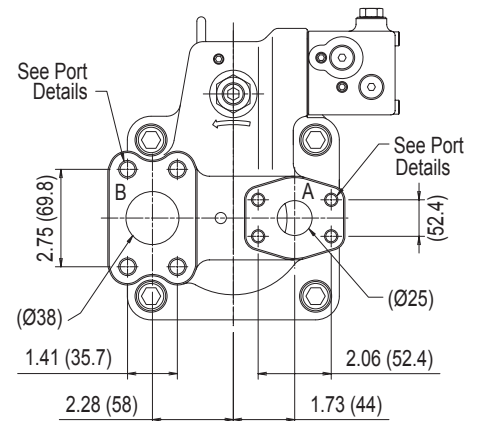
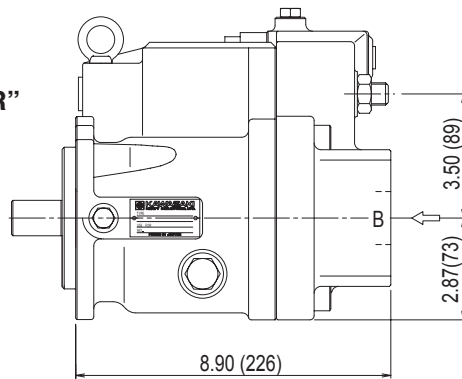


Model Code Option "T"



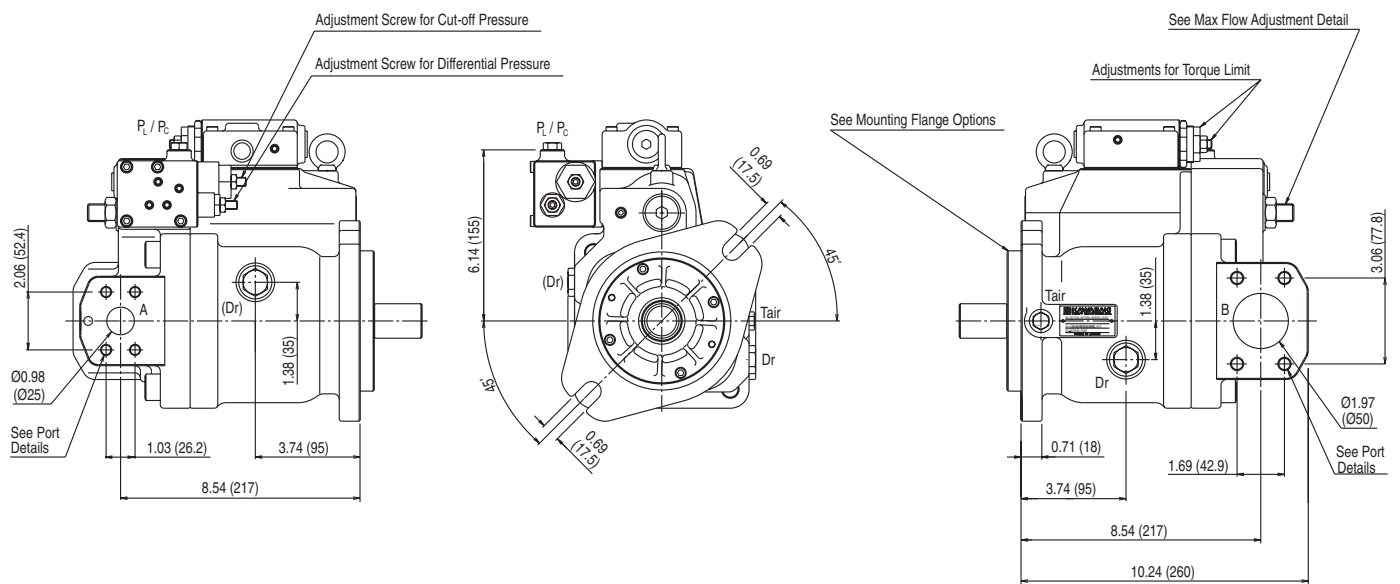
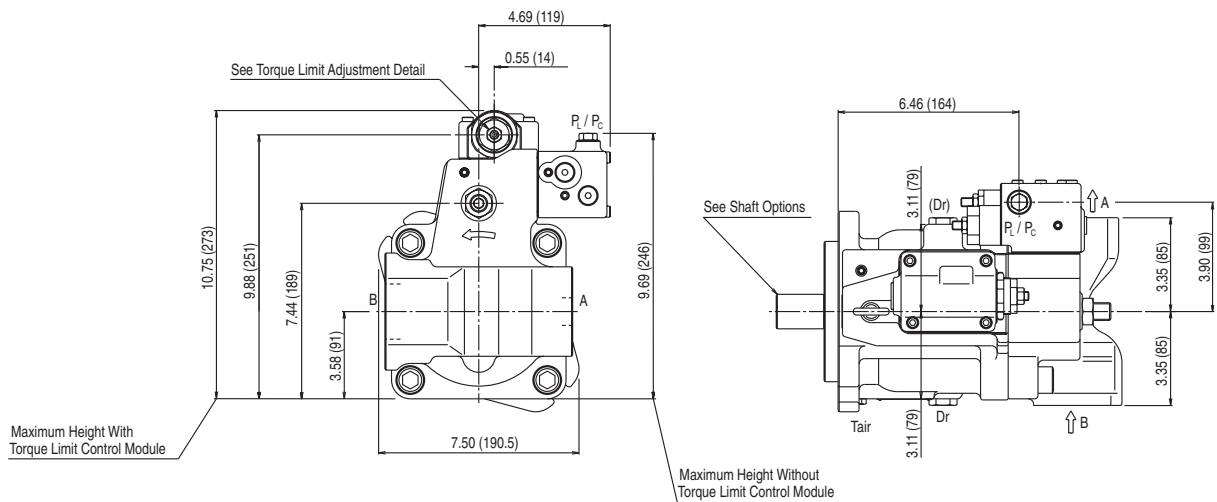
Rear Ports

Model Code Option "R"



K3VL80 With Cut-off/Load Sense Control And Torque Limit Module (Clockwise Rotation)

Inlet and outlet ports reversed for counter clockwise rotation



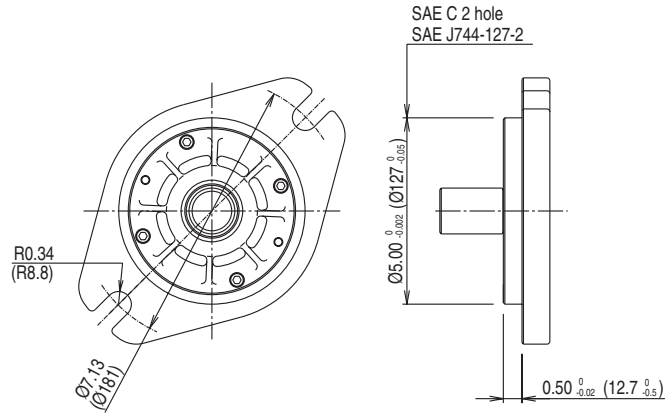
Port Details

	Port Name	Port Size and Description	Tightening Torque lbf-ft (Nm)
A	Delivery Port	1" SAE J518C Code 61 (5000 psi)	
		Unified Thread Type "S": 3/8" - 16 - 2B (0.71" depth)	42 (57)
B	Inlet Port	2" SAE J518C Code 61 (3000 psi)	
		Unified Thread Type "S": 1/2" - 13 - 2B (0.87" depth)	72 (98)
Dr	Drain Port	"S" Type: 1/2" O-Ring Boss - SAE J1926/1 (3/4" - 16UNF - 2B)	72 (98)
P ₁ / P ₂	PO/LO Control Port	"S" Type: 1/4" O-Ring Boss - SAE J1926/1 (7/16" - 20UNF - 2B)	9 (12)
Tair	Air Bleed Port	"S" Type: 1/4" O-Ring Boss - SAE J1926/1 (7/16" - 20UNF - 2B)	9 (12)

Dimensions shown in inches and (millimeters) unless noted otherwise.

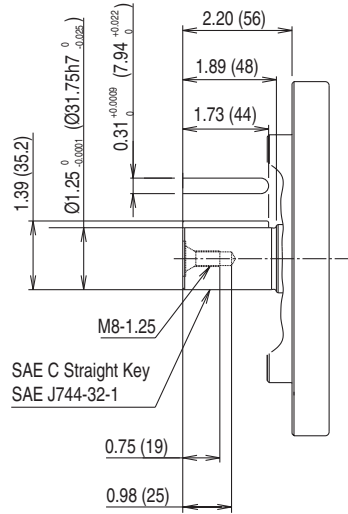
Mounting Flange

Model Code Options "K" or "S"

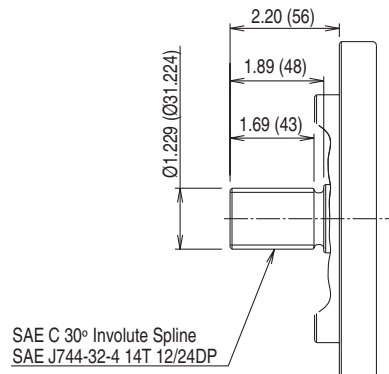


Shafts

Model Code Option "K"

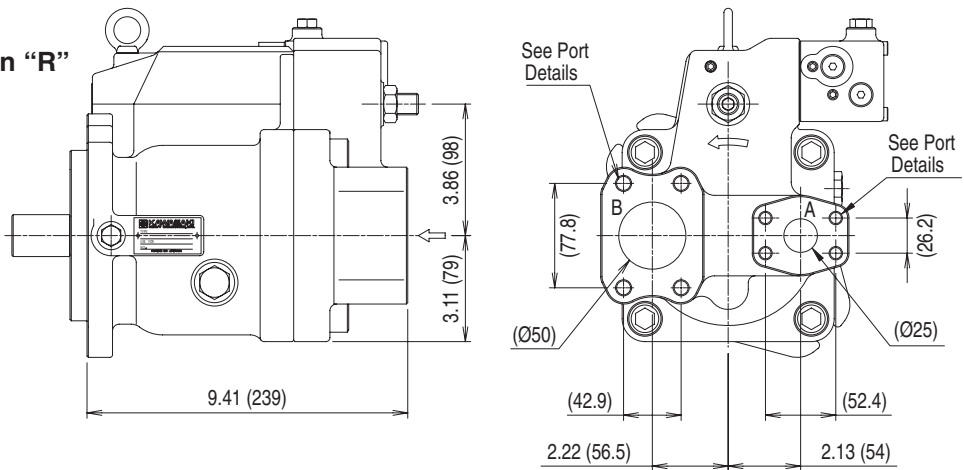


Model Code Option "S"



Rear Ports

Model Code Option "R"



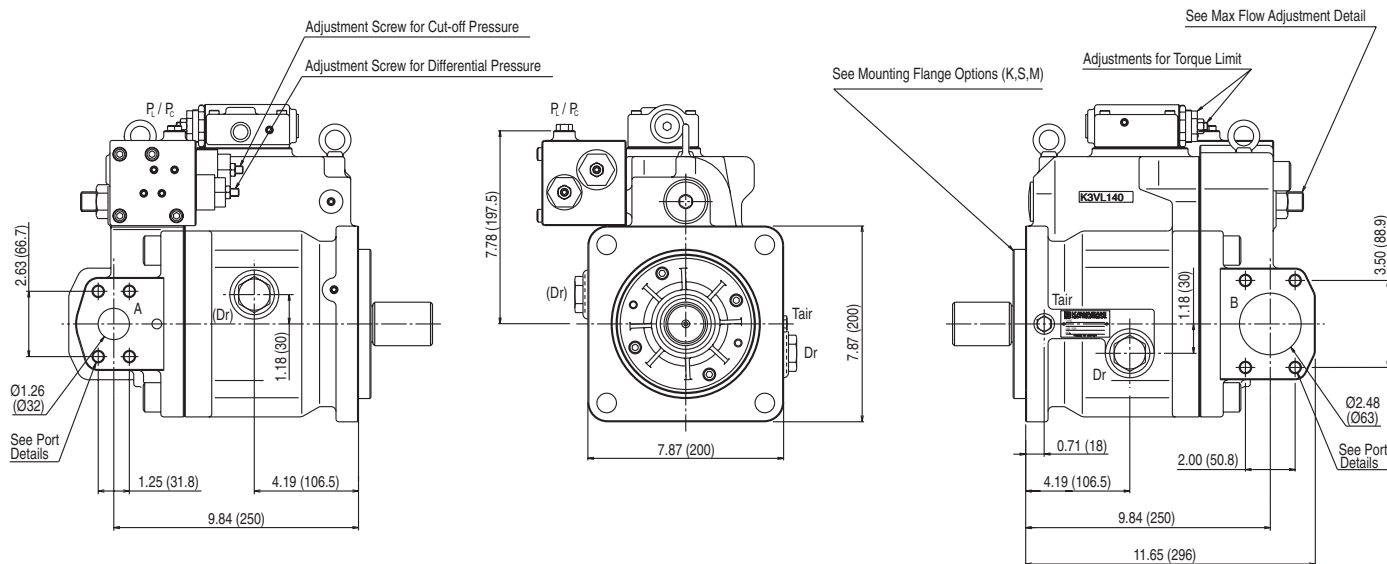
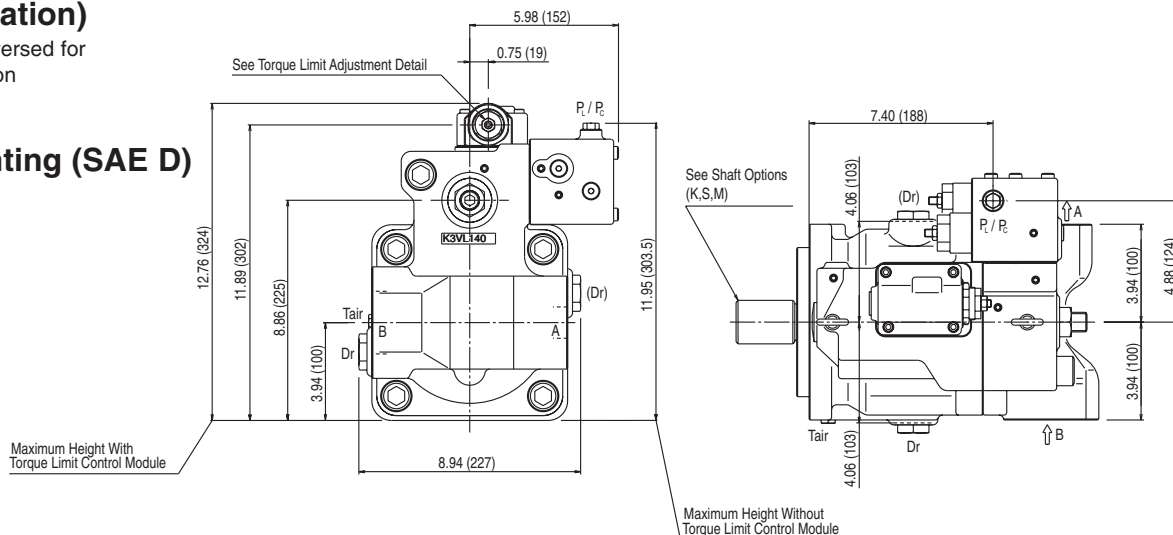
K3VL112/140

With Cut-off/Load Sense Control

And Torque Limit Module (Clockwise Rotation)

Inlet and outlet ports reversed for counter clockwise rotation

Standard Mounting (SAE D)



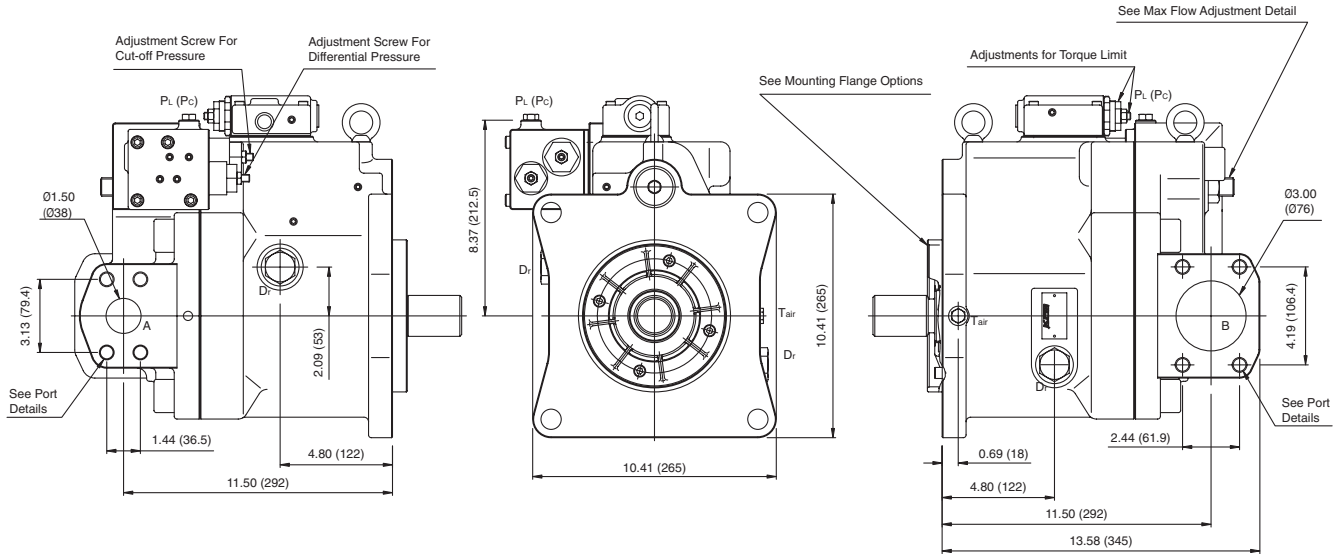
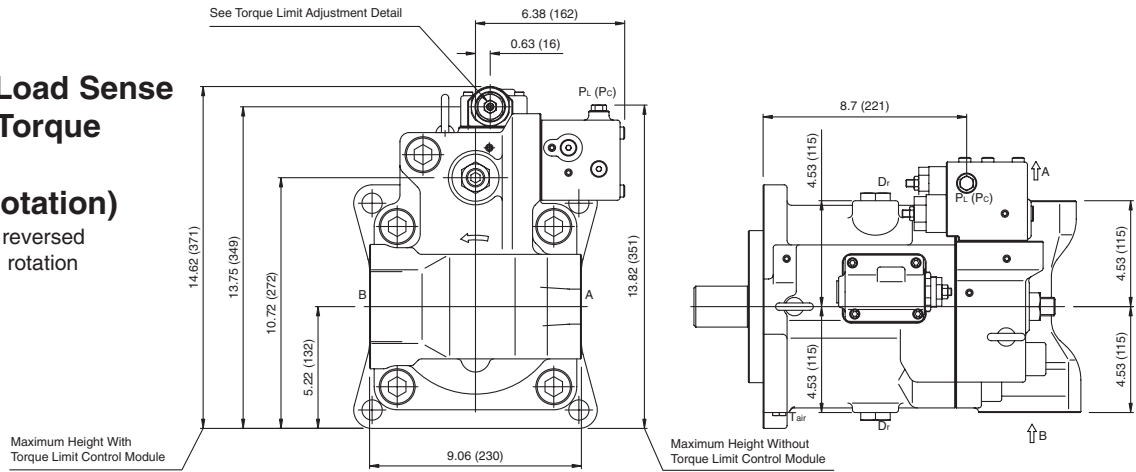
Port Details

	Port Name	Port Size and Description	Tightening Torque lbf-ft (Nm)
A	Delivery Port	1-1/4" SAE J518C Code 62 (6000 psi)	
		Unified Thread Type "S": 1/2" - 13 - 2B (0.87" depth)	72 (98)
B	Inlet Port	2-1/2" SAE J518C Code 61 (2500 psi)	
		Unified Thread Type "S": 1/2" - 13 - 2B (0.87" depth)	72 (98)
Dr	Drain Port	"S" Type: 3/4" O-Ring Boss - SAE J1926/1 (1-1/6" - 12UNF - 2B)	123 (167)
P / R	P0/L0 Control Port	"S" Type: 1/4" O-Ring Boss - SAE J1926/1 (7/16" - 20UNF - 2B)	9 (12)
Tair	Air Bleed Port	"S" Type: 1/4" O-Ring Boss - SAE J1926/1 (7/16" - 20UNF - 2B)	9 (12)

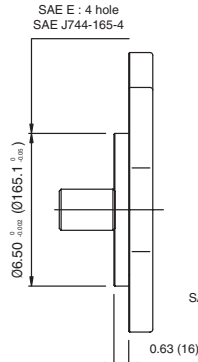
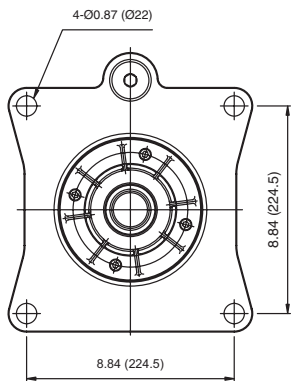
Dimensions shown in inches and (millimeters) unless noted otherwise.

K3VL200 With Cut-off/Load Sense Control And Torque Limit Module (Clockwise Rotation)

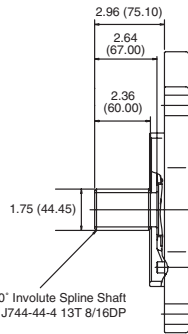
Inlet and outlet ports reversed
for counter clockwise rotation



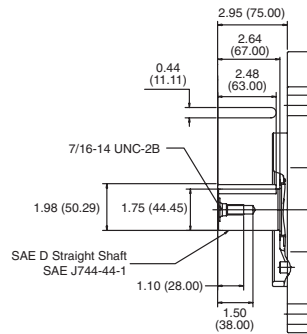
Mounting Flange



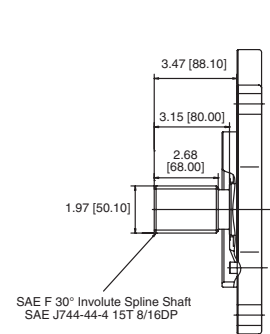
Model Code Option "S"



Model Code Option "K"



Model Code Option "F"



Port Details

	Port Name	Port Size and Description	Tightening Torque lbf-ft (Nm)
A	Delivery Port	1-1/2" SAE J518C Code 62 (6000 psi)	173 (235)
		Unified Thread Type "S": 5/8" - 11 - 2B (.98" depth)	
B	Inlet Port	3" SAE J518C Code 61 (2000 psi)	173 (235)
		Unified Thread Type "S": 5/8" - 11 - 2B (.98" depth)	
Dr	Drain Port	"S" Type: 3/4" O-Ring Boss - SAE J1926/1 (1-1/6" - 12UNF - 2B)	123 (167)
P _L / P _C	PO/LO Control Port	"S" Type: 1/4" O-Ring Boss - SAE J1926/1 (7/16" - 20UNF - 2B)	9 (12)
T _{air}	Air Bleed Port	"S" Type: 1/4" O-Ring Boss - SAE J1926/1 (7/16" - 20UNF - 2B)	9 (12)

Dimensions shown in inches and (millimeters) unless noted otherwise.